

KATIKATI DATA SUMMARIES

OUR PEOPLE

Total Katikati Population ¹

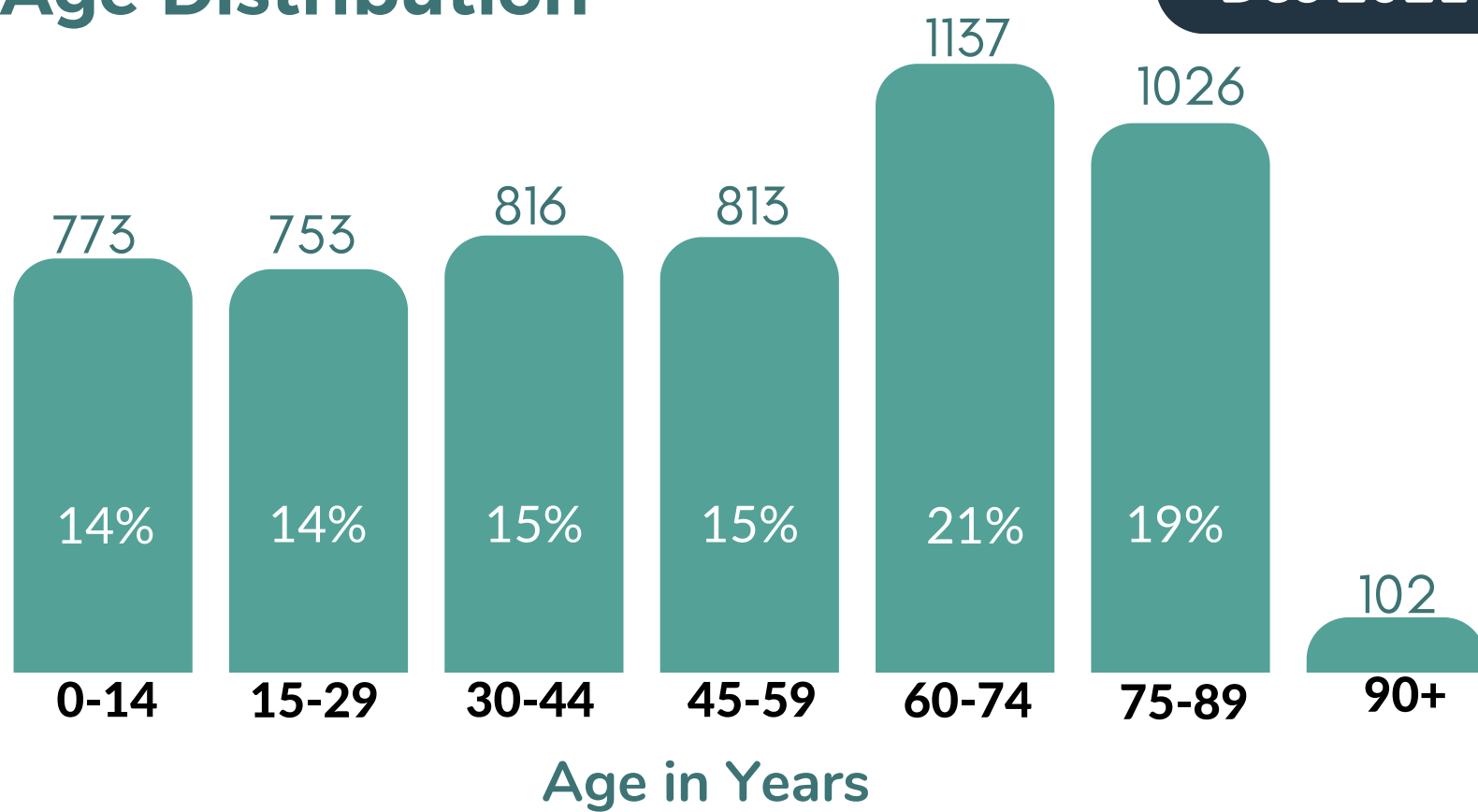
5460

Dec 2021

The Katikati population has increased by 8.98% since the 2018 census

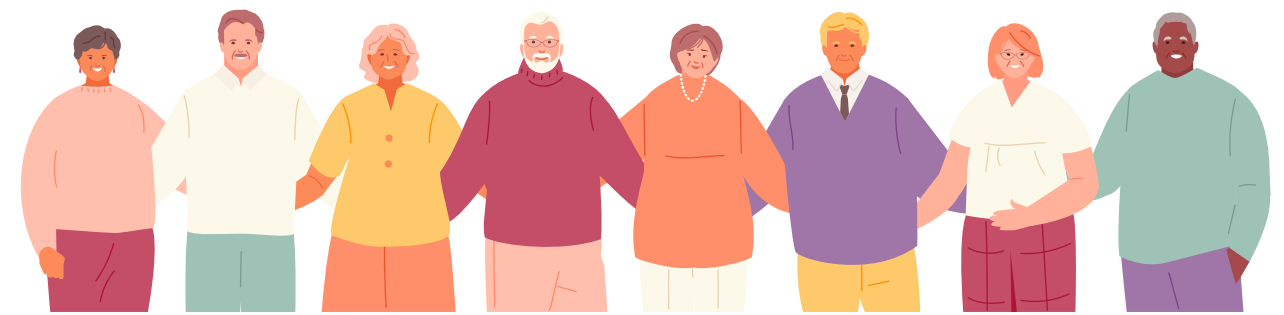
9% ↑

Age Distribution ¹



Dec 2021

41% Of Katikati people are over 60 years of age
Katikati has more older residents than Tauranga (25%) & NZ (22%)



Ethnic Makeup of Community ²

Census 2018

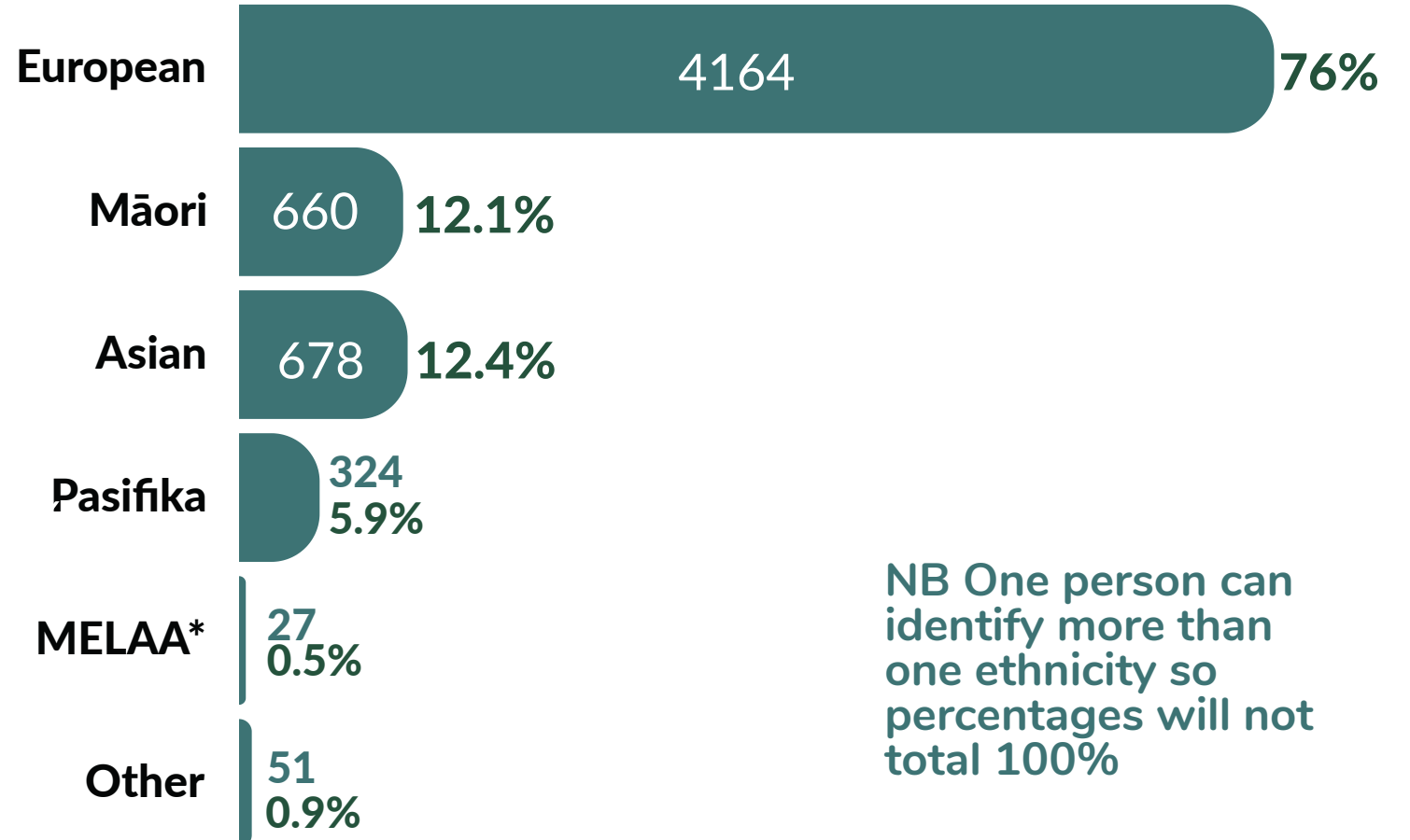
The majority (76%) of the Katikati community identified their ethnicity as **European** (NZ European 62%, Other European 7%; European not further defined 9%)



Māori made up 12% of the population of Katikati compared to 18% in Tauranga & 17% for NZ as a whole

471 community members (9%) were of **Indian ethnicity**

210 community members (4%) were of **Tongan ethnicity**



NB One person can identify more than one ethnicity so percentages will not total 100%

MELAA = Middle Eastern, Latin American &/or African

No. of People with Disabilities ³

441

March 2022

People with high functional limitations across any of 6 categories including communication, hearing, remembering, seeing, walking and selfcare



Languages Spoken ² (In addition to English)

Punjabi
171
3.4%

Tongan
129
2.6%

Māori
108
2.2%

Source Info:

1. Stats NZ Experimental Administrative Population Census Dec 2021
 2. Census 2018
 3. Social Wellbeing Agency analysis from Stats NZ IDI
- All sources accessed at: <https://swa.govt.nz/what-we-do/community-insights-explorer/>



Infographics produced by:
Community Insights

Community Insights is a division of
SocialLink | Western Bay of Plenty
Building a Thriving Social Sector

Total Katikati Population¹

5460

Dec 2021

Total No. of Households²

2034

Census 2018

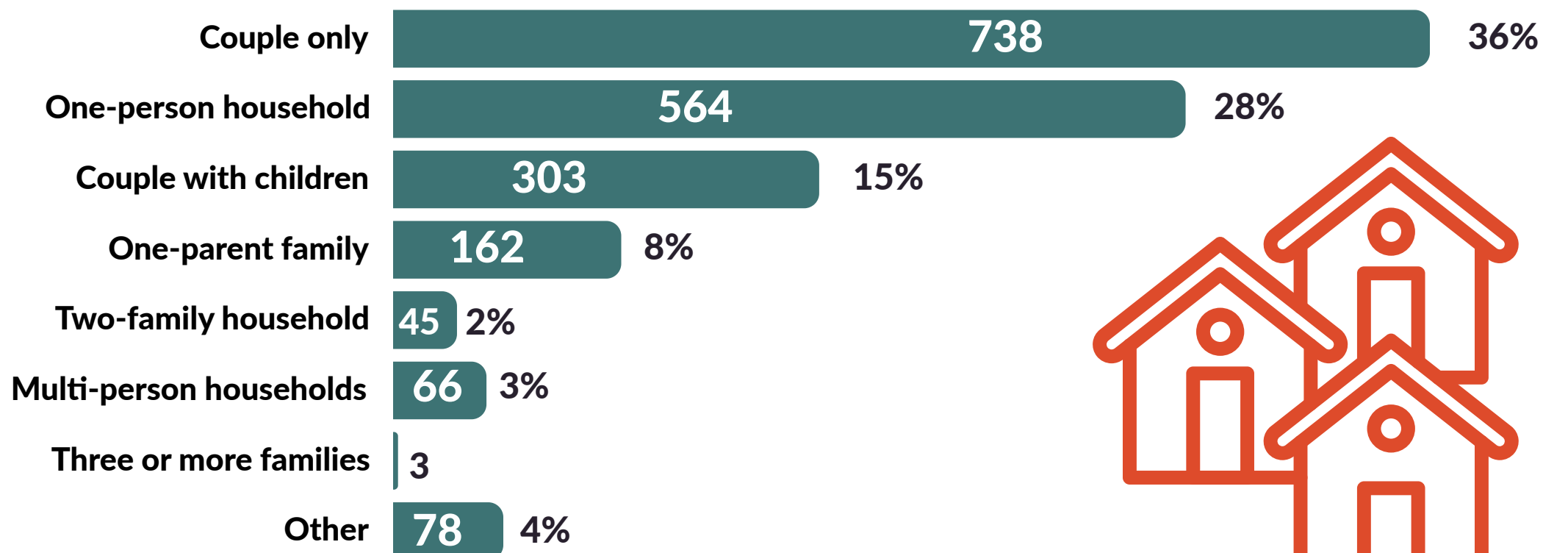
Total No. of Dwellings²

2196

Census 2018

Household Composition²

Two out of three households in Katikati are **people living alone** or **couple only** households



Census 2018



Home Ownership²

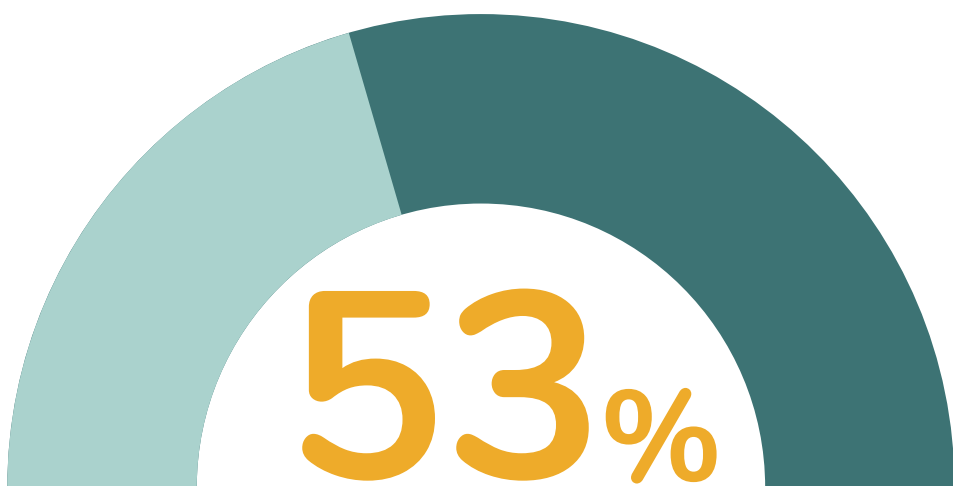
MORE Katikati people live in a home they own compared to Tauranga (48%) & NZ (44%)

Proportion of people, (15 years+), who own (or partly own) the dwelling they usually live in or hold the dwelling in a family trust

81² Households had no vehicle available for private use

Census 2018

Census 2018



Market Rent in Katikati³ 01 Jan - 30 Jun 2023

HOUSE				
SIZE	ACTIVE BONDS	LOWER QUARTILE	MEDIAN RENT	UPPER QUARTILE
1 bedroom	18	\$268	\$270	\$350
2 bedrooms	75	\$405	\$430	\$450
3 bedrooms	234	\$530	\$565	\$600

Jun 2023

Total Bonds Lodged: **450**

Median Rent: **\$520**

Source Info:

1. Stats NZ Experimental Administrative Population Census, Dec 2021
2. Census 2018
3. Tenancy Services [accessed 28 August 2023]

Note: The [market rent tool](#) shows bond information for [non-government -owned] properties where bonds have been lodged in the six months being reported on. **Total Bonds lodged** is all bonds lodged in that 6 month period, **Active Bonds** in the data for each dwelling type only includes current bonds in the six month period. **Lower quartile** is the weekly rent at 25% of all rents when they are placed in order - **Upper quartile** is 75% of all market rents when ordered by value

See: https://www.tenancy.govt.nz/rent-bond-and-bills/market-rent/?location=Katikati+-+Katikati&period=4&ation_doSearchValues=Find+Rent

Sources 1-2 accessed at: <https://swa.govt.nz/what-we-do/community-insights-explorer/>



Infographics produced by:

Community Insights

Community Insights is a division of
Socialink Western Bay of Plenty
Building a Thriving Social Sector

KATIKATI DATA SUMMARIES

INCOME & EMPLOYMENT

Dec 2021

Median Individual Income¹
\$32,050
 KATIKATI

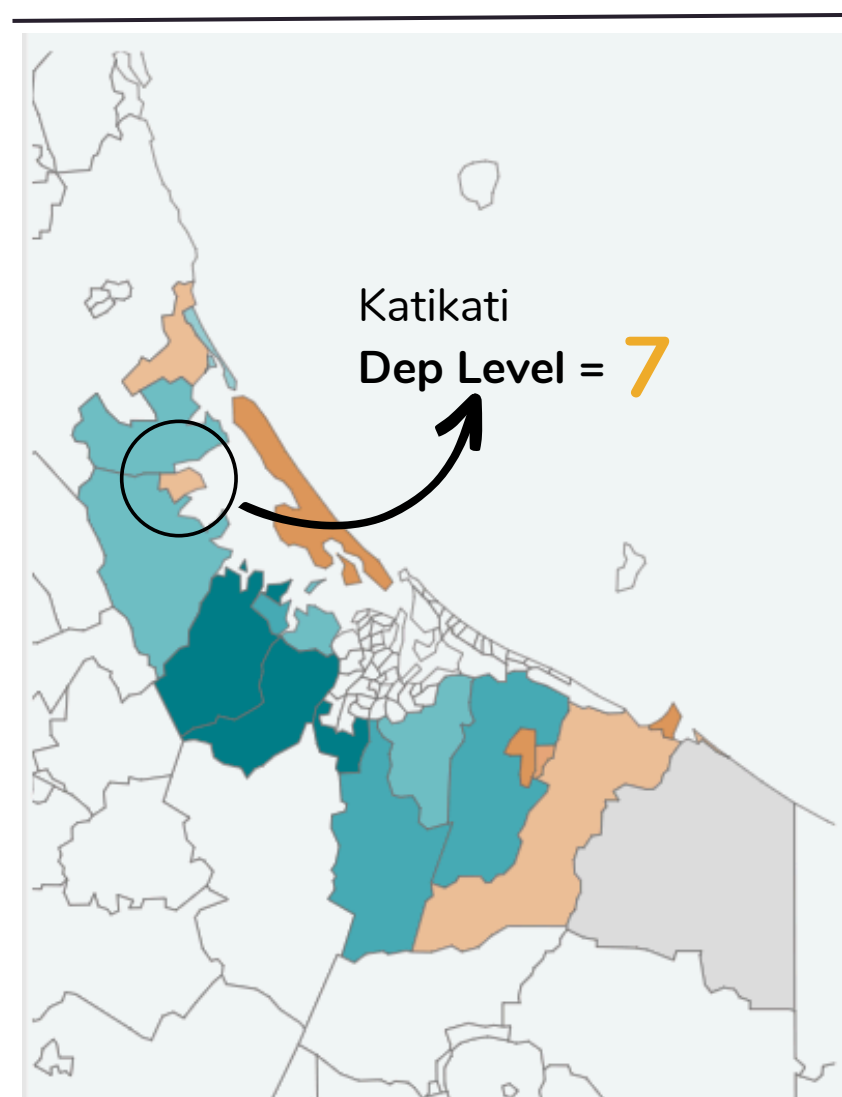
Median Individual Income¹
\$43,830
 TAURANGA

Median Individual Income¹
\$44,350
 NEW ZEALAND

Median before-tax income received for the financial year from all sources for people aged 15 years and over

Deprivation Index²

NZDep is an area-based measure (developed by the University of Otago) of **relative socio-economic deprivation**. Small areas deprivation scores are grouped into deciles.



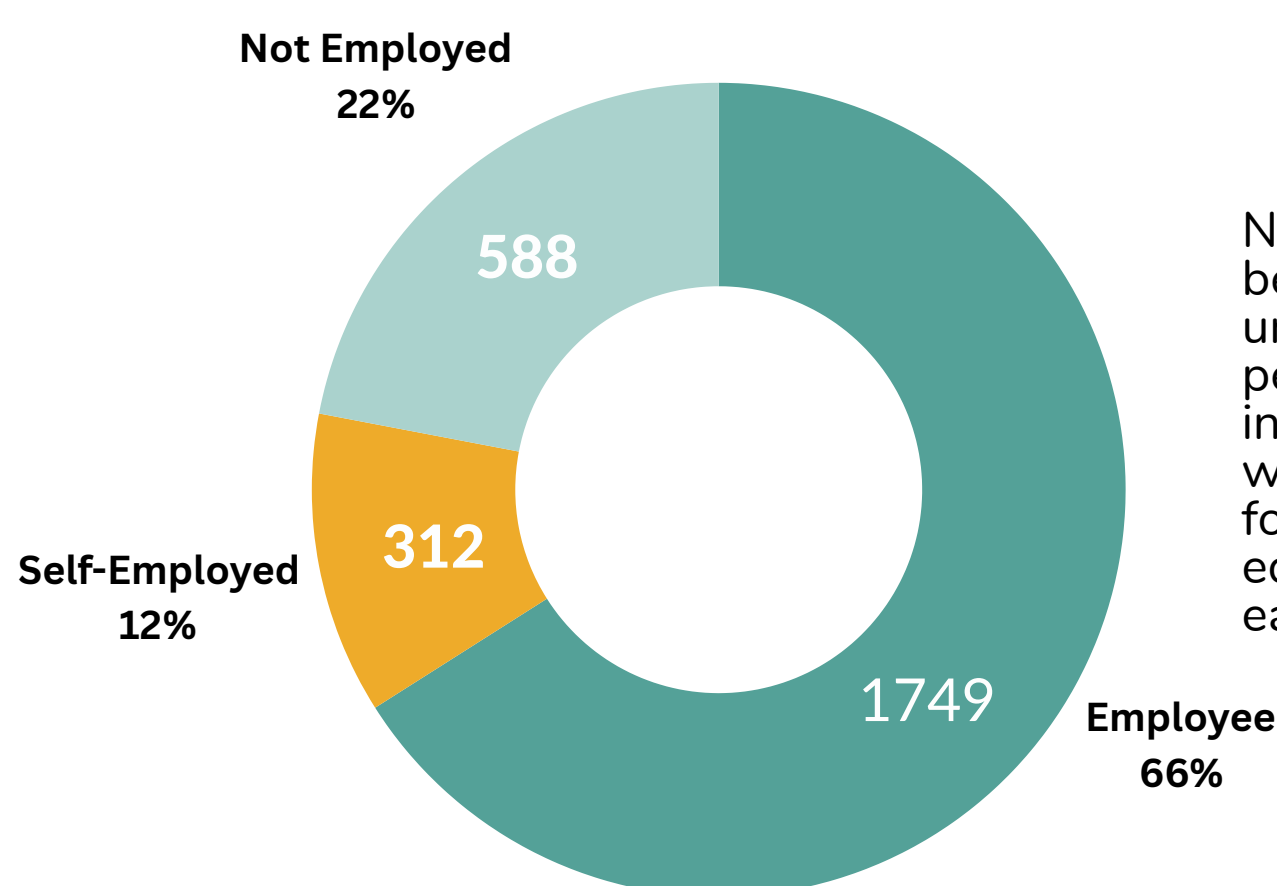
Dimension of Deprivation	Description of variable (in order of decreasing weight in the index)
Communication	People who have no access to internet at home
Income	People aged 18-64 receiving a means tested benefit
Income	People living in equivalised* households with income below an income threshold
Employment	People aged 18-64 unemployed
Qualifications	People aged 18-64 without any qualifications
Owned Home	People not living in own home
Support	People aged under 65 living in a single-parent family
Living Space	People living in equivalised* households below a bedroom occupancy threshold (overcrowded houses)
Living Condition	People living in dwellings that are always damp &/or always have mould greater than A4 size

*Equivalisation: methods are used to control for household size/composition

Katikati has a Deprivation Index of 7, suggesting levels of deprivation are present within its community. Decile 1 represents areas with the least deprived scores, decile 10 represents areas with the most deprived scores.

Dec 2021

Employment Type¹



Employment status of Katikati's working age adults

NB "Not employed" rate will be higher than the unemployment rate, as all people 15-64 years are included, including those who are not actively looking for work such as those in education, caregivers and early retired

588
 Not in Employment¹

Source Info:

1. Stats NZ Experimental Administrative Population Census Dec 2021
2. University of Otago DepIndex based on Census 2018 data

Both datasets accessed at:
<https://swa.govt.nz/what-we-do/community-insights-explorer/>



Infographics produced by:

Community Insights

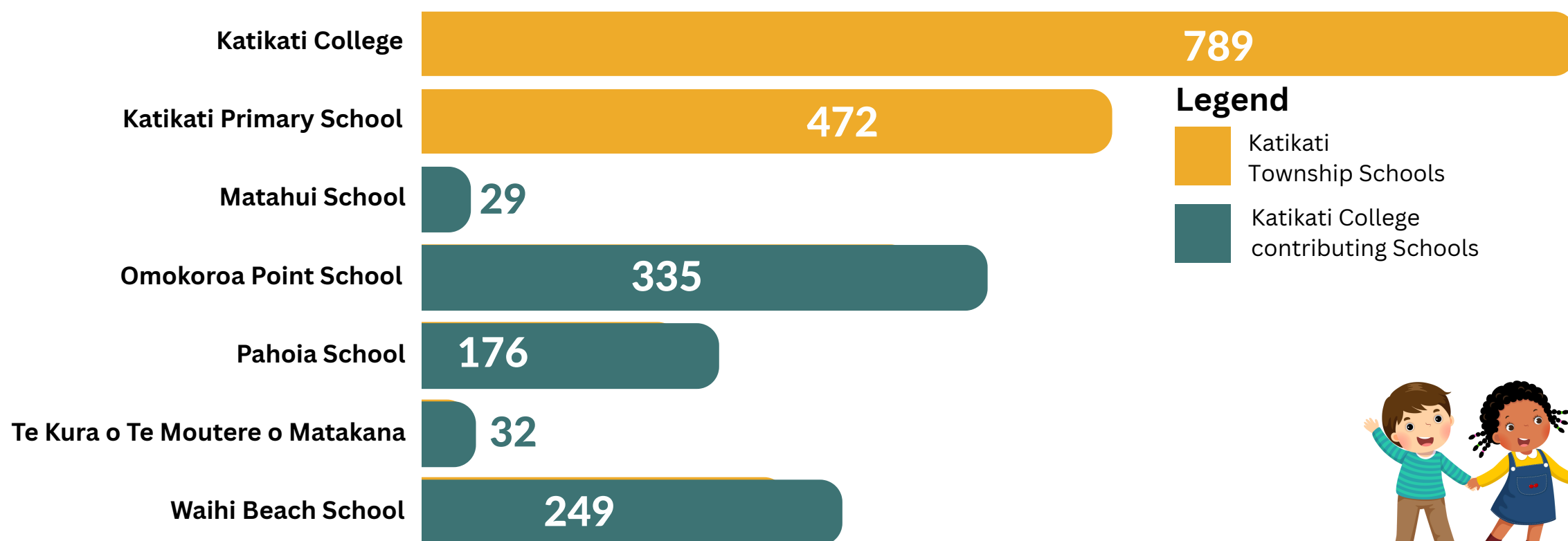
Community Insights is a division of
Socialink Western Bay of Plenty
 Building a Thriving Social Sector

KATIKATI DATA SUMMARIES

EDUCATION

Katikati School Rolls ¹

July 2022

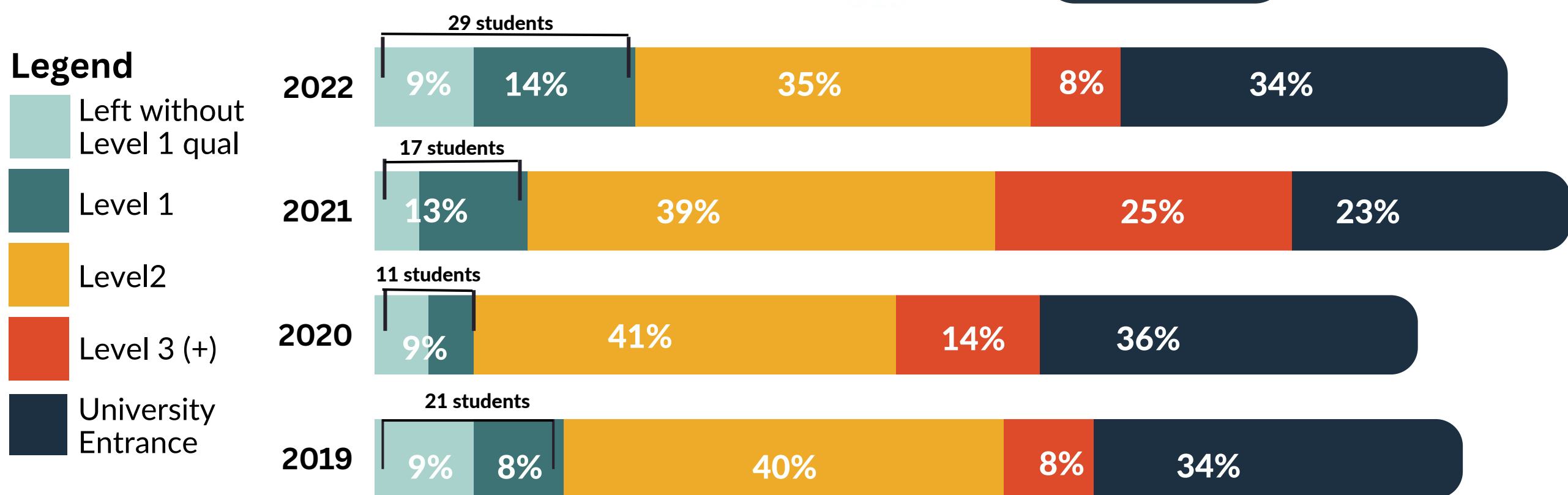


2082
children/young people were enrolled in schools in the Katikati area



Katikati College Leavers' Attainment ²

July 2022



In 2022, 23% (29 students) of Katikati's school leavers left with a Level 1 qualification or less

No of School Leavers
2022: 126
2021: 133
2020: 116
2019: 121

WBOP NEET (Not in Employment or Education & Training) Rate ³

Dec 2022

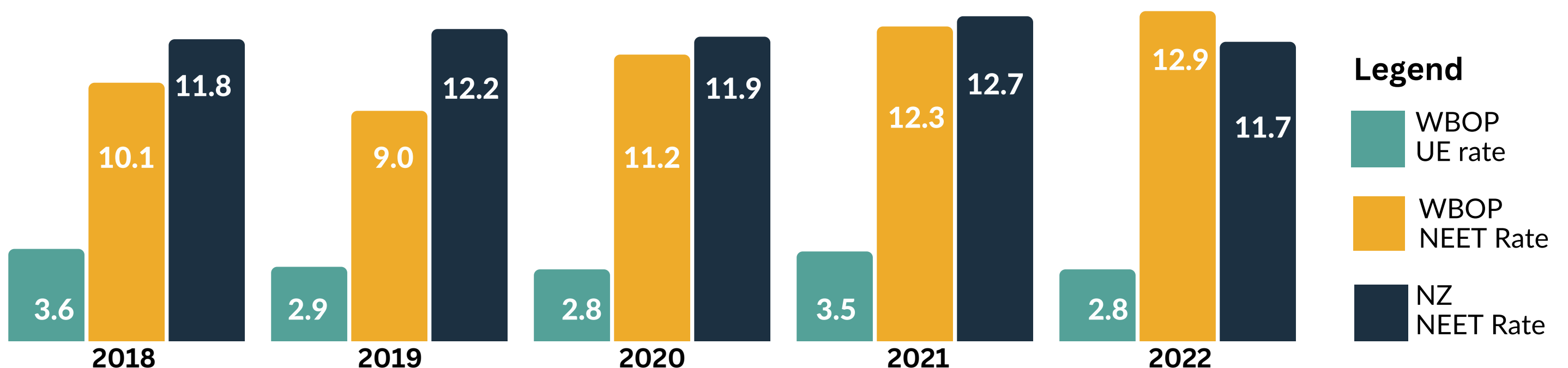
The **NEET rate** measures the proportion of people aged 15–24 years who are not employed or engaged in education or training.

12.9%
WBOP NEET Rate 2022

WBOP NEET Rate is at its highest level since 2014 & is higher than the national rate (for young people not in training, employment or education).

2.8%
WBOP UE Rate 2022

The **Unemployment (UE) rate** measures the number of Jobseekers for the WBOPDC area. To reduce volatility the UE rate is presented as an average over the four quarters.



Source Info:

1. Education Counts - School Rolls Dataset [Accessed 28 August 2023]
2. Education Counts - Student Attainment Dataset [Accessed 28 August 2023]
3. Statistics New Zealand's Household Labour Force Survey [Accessed 28 August 2023 at <https://www.communityinsights.org.nz/education-dashboards/> See NEET by TA.]



Infographics produced by:

Community Insights

Community Insights is a division of
Socialink Western Bay of Plenty
Building a Thriving Social Sector

KATIKATI DATA SUMMARIES

NEIGHBOURING COMMUNITIES - QUICK STATS

Beach Communities (Waihi Beach/Bowentown and Athenree)

Dec 2021


Total Population ¹
3486

2655 Waihi Beach & Bowentown

 **990** Households

831 Athenree

 **279** Households

6%  The population of the beachside communities has increased by 6.1% since the 2018 census

Census 2018

Ethnicity ^{2*}

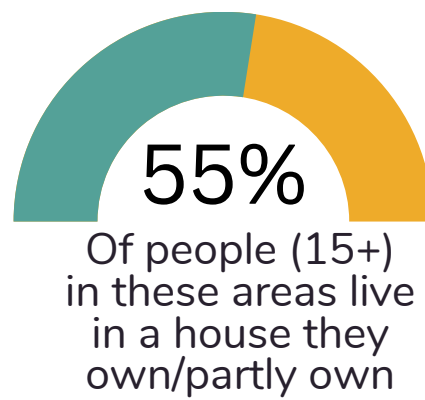
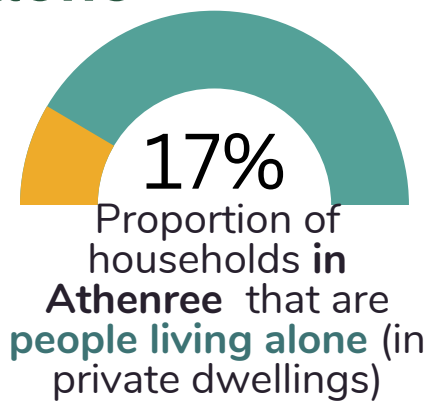
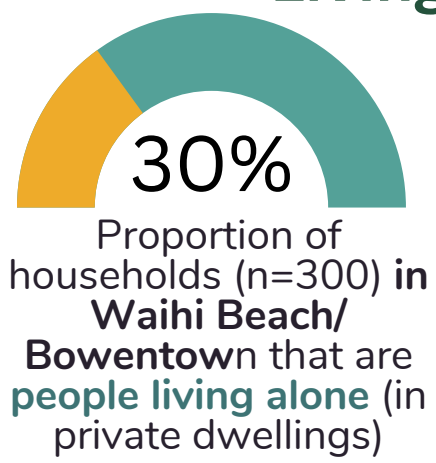


92% European (n=3198)
14% Māori (n=483)
2% Asian (n=78)

1.2% Pasifika (n=39)
1.5% Other (n=51)

*NB One person can identify more than one ethnicity so percentages will not total 100%

Living Alone



120³ people living with activity limitations as a result of a disability

41% are aged over 60 years

1 in 4 are self-employed

Rural areas adjacent to Katikati (Tahawai & Aongatete)

Dec 2021


Total Population ¹
5415

1908 Tahawai

 **702** Households

3507 Aongatete

 **1191** Households

6%  The population of these areas has increased by 5.9% since the 2018 census

Census 2018

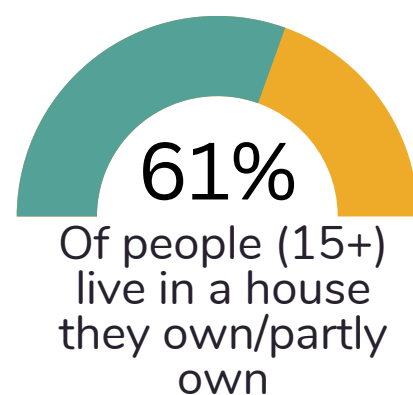
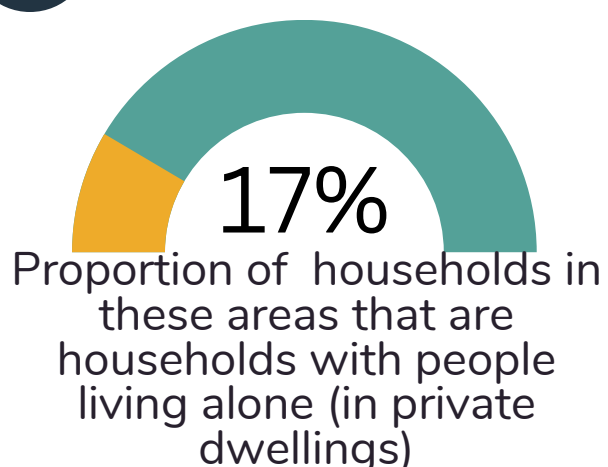
Ethnicity ^{2*}



87% European (n=4704)
12% Māori (n=657)
4% Asian (n=228)

1.1% Pasifika (n=216)
1.5% Other (n=81)

*NB One person can identify more than one ethnicity so percentages will not total 100%



252³ people living with activity limitations as a result of a disability

39% are aged over 60 years

24% are self-employed

Source Info:

1. Stats NZ Experimental Administrative Population Census Dec 2021
2. Census 2018
3. Social Wellbeing Agency analysis from Stats NZ IDI

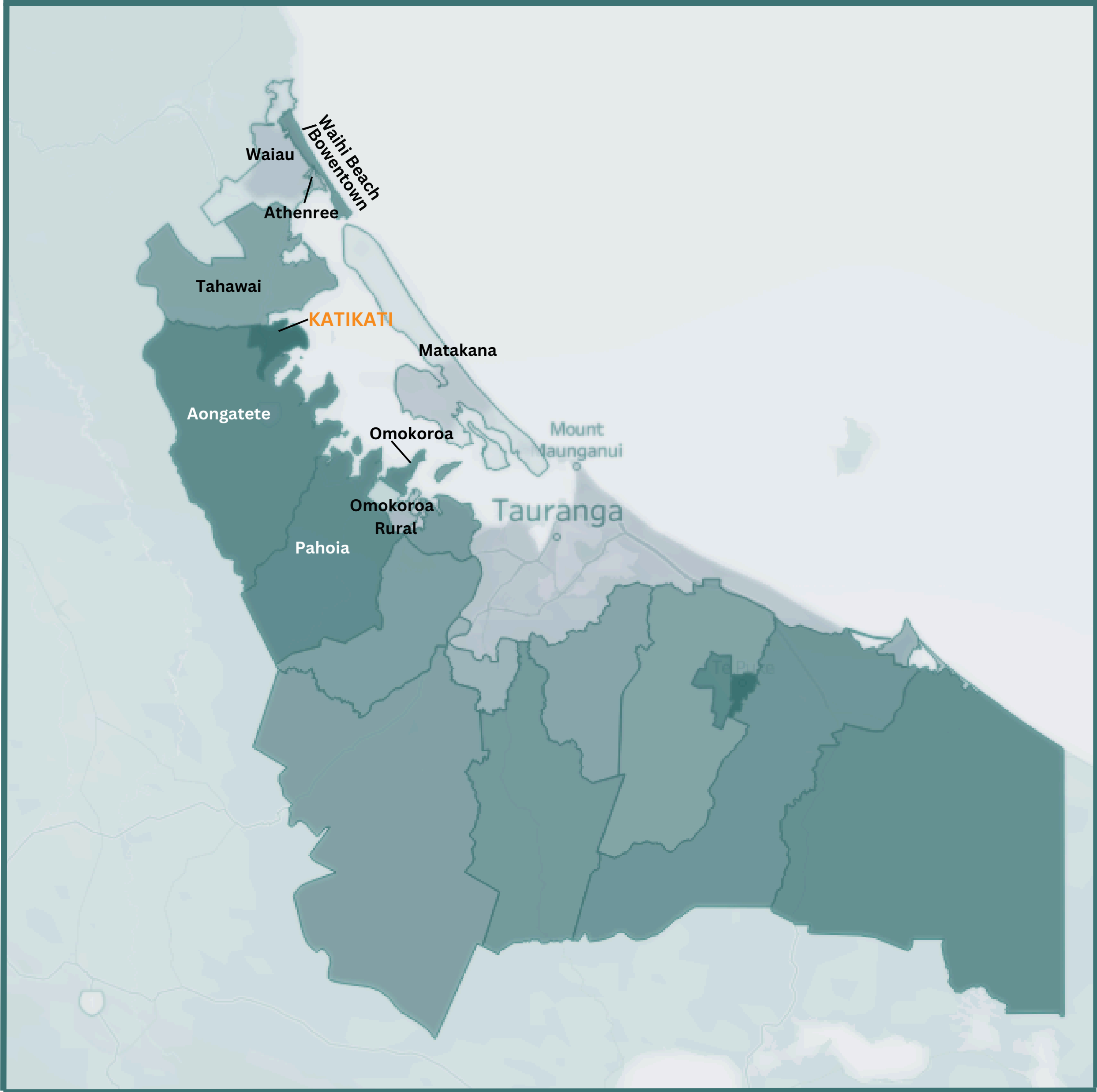


Infographics produced by:
Community Insights

Community Insights is a division of
Socialink Western Bay of Plenty
Building a Thriving Social Sector

KATIKATI DATA SUMMARIES

KATIKATI & NEIGHBOURING STATISTICAL AREAS (SA2'S)



Infographics produced by:
Community Insights

Community Insights is a division of
Socialink Western Bay of Plenty
Building a Thriving Social Sector